

# AI and the Catholic Church

**Brendan Newell**  
Principal Architect  
Microsoft

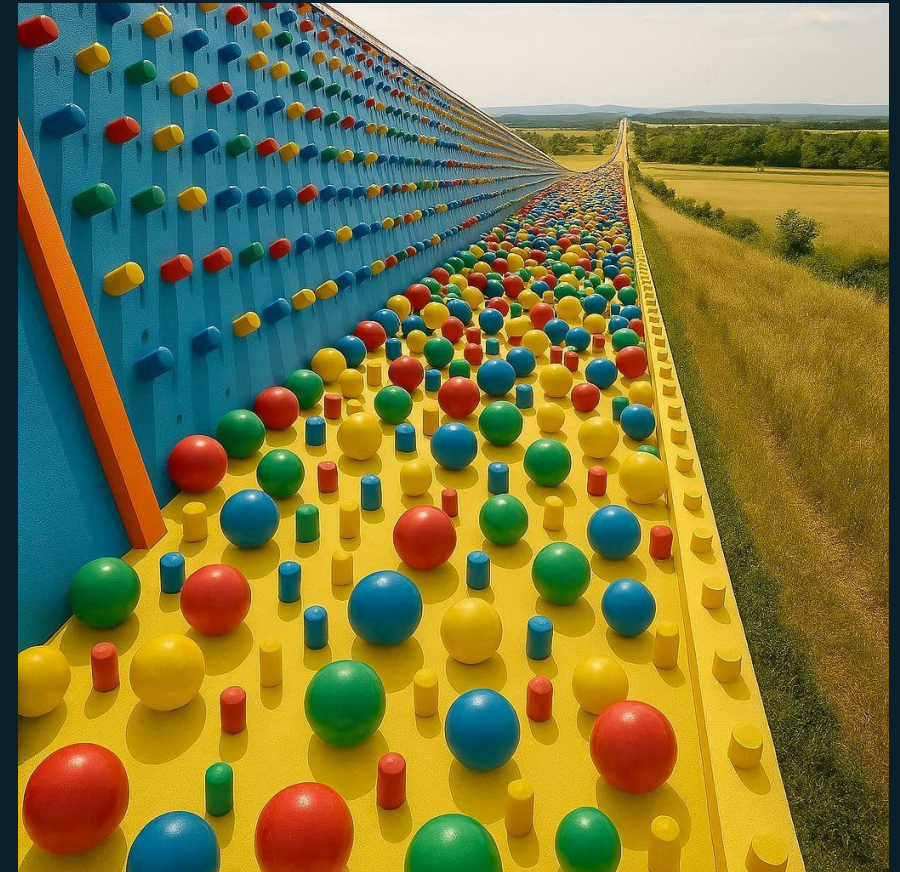


# About Me:

- Parishioner at SS Cyril and Methodius
- Been with Microsoft 27 years
- Focus on Cybersecurity
- Represent Microsoft on Rome Call for AI Ethics.

What is AI?

In short, it is using Probability at a MASSIVE scale  
Produces something never seen before.







I have a box. My cat likes to sleep in the \_\_\_\_\_

# AI and Society

**EdTech**  
Focus On K-12™

# A.I. Is Mastering Language. Should We Trust What It Says?

[illegible]

## How Do Patients Feel About Using AI in Health Care?

School and IT leaders should consider these questions before investing in artificial intelligence and machine learning technologies for the classroom.

## A close-up photograph of a computer motherboard. A large, black, finned heat sink is mounted on the right side. Below it, a RAM module is visible with a white label featuring a barcode and the text 'DDR3-1333'. Various other components like capacitors and integrated circuits are scattered across the green circuit board. A small inset image in the top right corner shows a blurred, colorful, abstract pattern.

## Disability Bias in AI Hiring Tools Targeted in US Guidance (1)

# The world today...



AI **innovation** is occurring at a rapid pace



Companies are accelerating **adoption** of AI



Societal expectations are **evolving**



Governments are **regulating** AI in response



# The Catholic Response

# Rome Call for AI Ethics

A framework created by the Vatican in 2020 to set a roadmap for Ethical AI

# Antiqua et Nova.

Document from Dicastery for Doctrine of the Faith and Dicastery for Culture

# Rome Call Main Points



Fairness



Reliability  
& Safety



Privacy &  
Security



Inclusiveness



Transparency



Accountability

# The Standard's Goals at a Glance

## Accountability

- A1: Impact Assessment
- A2: What are the adverse impacts
- A3: Fit for purpose
- A4: Data governance and management
- A5: Human oversight and control

## Transparency

- T1: Disclose when AI is used for decision making
- T2: Communication to all involved
- T3: Disclosure of AI interaction

## Fairness

- F1: Quality of service
- F2: Who reaps the benefits
- F3: Minimization of stereotyping, demeaning outputs

## Reliability & Safety

- RS1: Is it 'up' when it is desired?
- RS2: How to recover from failures
- RS3: Ongoing monitoring, feedback, and evaluation

## Privacy & Security

- PS1: Is Data protected?
- PS2: Are the correct Security controls in place?

## Inclusiveness

- I1: Accessibility Standards compliance

# Human Intelligence vs AI

## Human Intelligence is Embodied

Human intelligence integrates sensory experience and emotional depth beyond mere data processing.

## Ethical and Moral Judgment

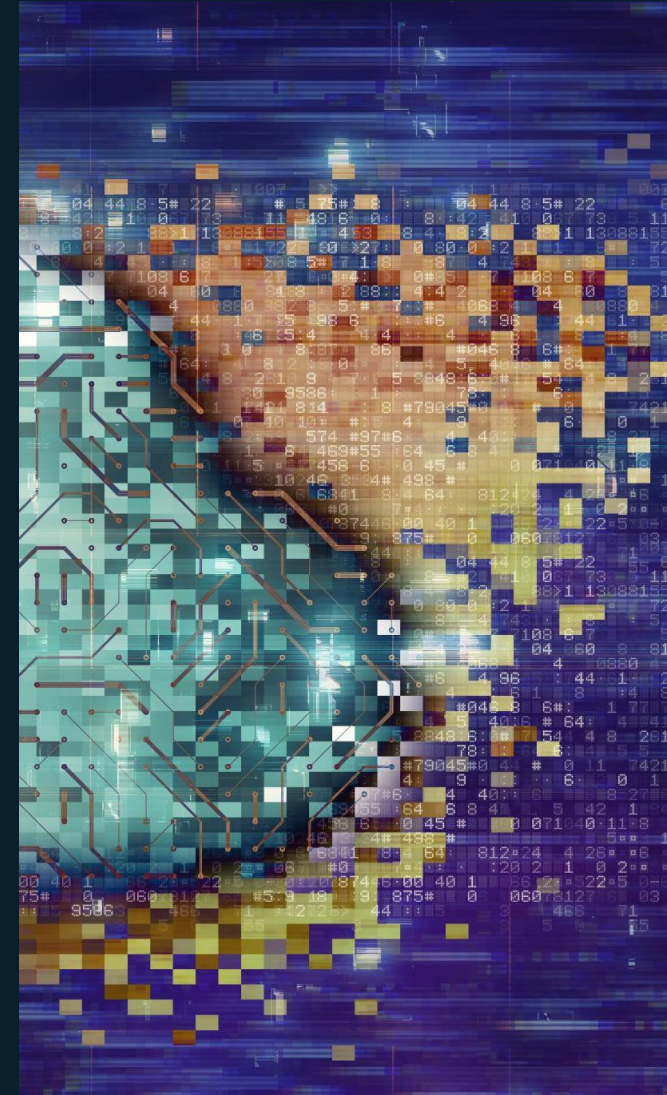
Human cognition includes moral discernment and respect for rights, essential in complex decision-making.

## Relational Intelligence and Community

Human intelligence thrives in dialogue and community, fostering creativity and cultural growth.

## Distinct Role from AI

AI can augment but cannot replace uniquely human wisdom, virtue, and moral responsibility.





# Limits of AI: Absence of Understanding and Morality



## **Lack of Genuine Understanding**

AI has no real intelligence.

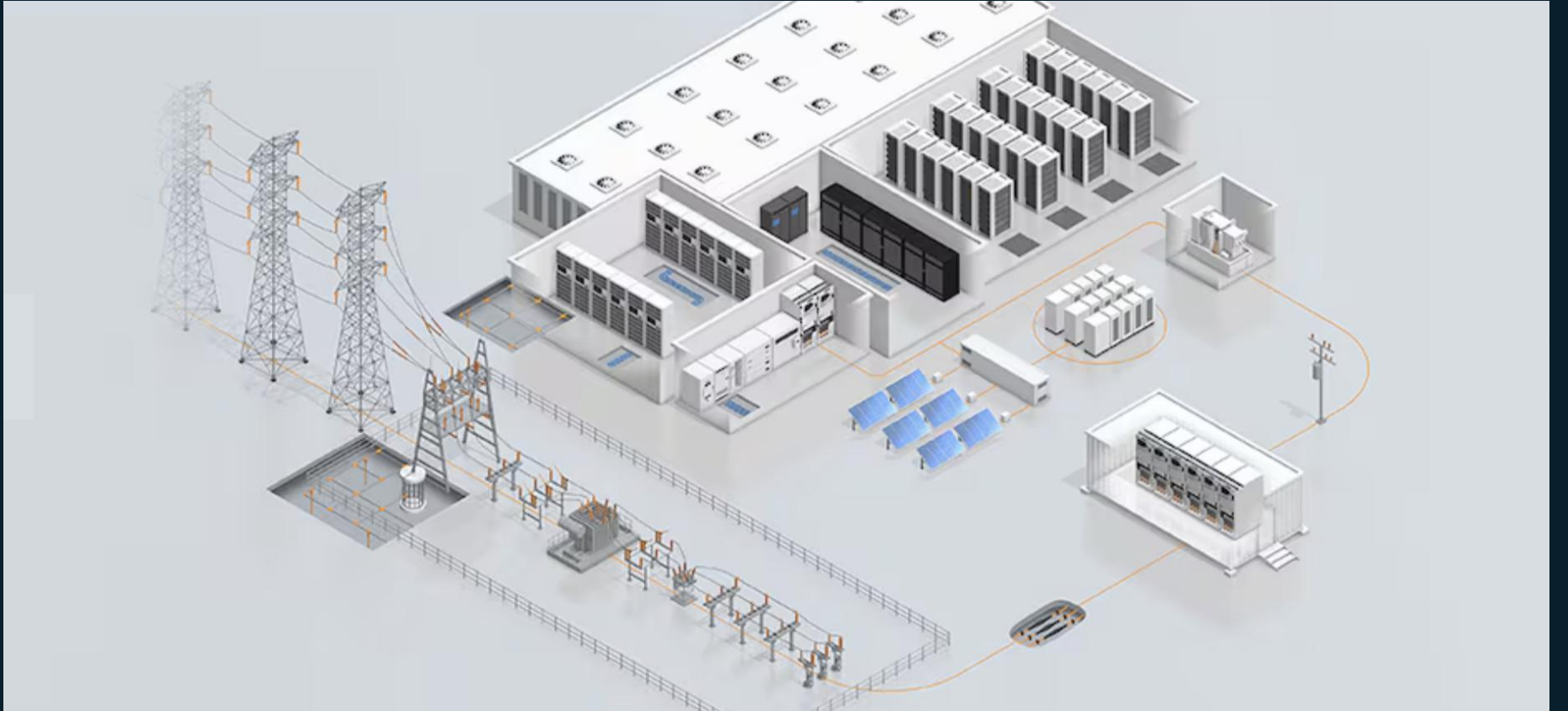
## **Absence of Moral Agency**

AI cannot experience empathy, justice or mercy. It has no sense of ethical responsibility.

## **Need for Human Oversight**

# Responsible AI Considerations

# Power Consumption\Environment



# Economic Impact





# Digital Divide





# Digital Crime



# Social Misuse



Questions?